



Slim H75 M Stool

design Paolo Vernier, 2017

The Slim stool in version H65 or H75 with sled metal base is available for indoor and outdoor use.

The outdoor version is available in 15 weather-resistant finishes.

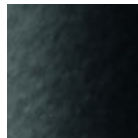
Stools are stackable up to four pieces.

Colors and Materials

Structure



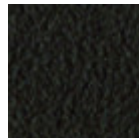
White steel



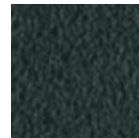
Black steel



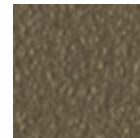
Sand steel



Brown steel



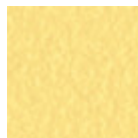
Grafite metal



Fango steel



Bronze metal



Pastel yellow steel



Ocher steel



Red steel



Sage green metal



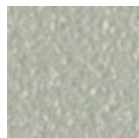
Light blue metal



Ocean blue steel

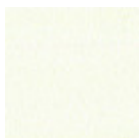


Facepowder pink metal



Light grey steel

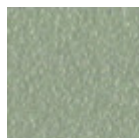
Coating



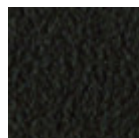
White steel



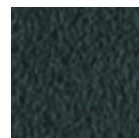
Black steel



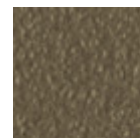
Sand steel



Brown steel



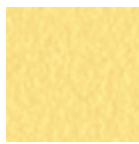
Grafite metal



Fango steel



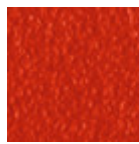
Bronze metal



Pastel yellow steel



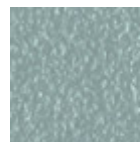
Ocher steel



Red steel



Sage green metal



Light blue metal



Ocean blue steel

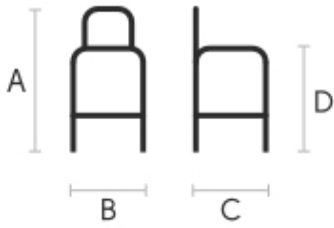


Facepowder pink metal



Light grey steel

Dimensions



	cm	inch
A	106	41.7
B	54	21.3
C	52	20.5
D	76	29.9

Volumetric Details

Weight 10 Kg

Volume 0.28 mc

Package 1