



Plissé H103 Bistro Table

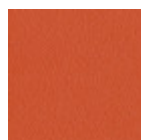
design Paola Navone, 2022

Bistrò base in lacquered metal, suitable for indoor and outdoor use, available combined with round tops.

From the collaboration with Paola Navone comes Plissé, a collection of tables with a sculptural and elegant presence, but also light and informal. In a slightly ironic way, Plissé pays homage to the world of fashion and the iconic pleated work, so popular in the 50s and 60s, and still trendy in fashion today.

Colors and Materials

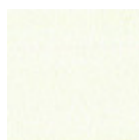
Structure



Papaya orange steel



Light blue metal



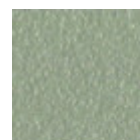
White steel



Ocean blue steel



Bronze metal



Sand steel



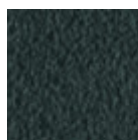
Fango steel



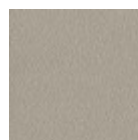
Golden yellow metal



Pastel yellow steel



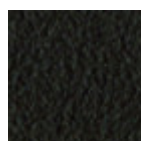
Grafite metal



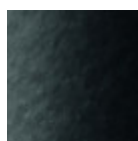
Ash grey metal



Light grey steel



Brown steel



Black steel



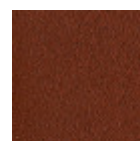
Ocher steel



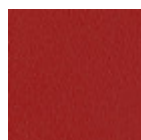
Facepowder pink metal



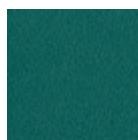
Red steel



Bulgaro red metal



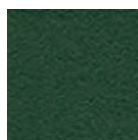
Cherry red metal



Pine green steel

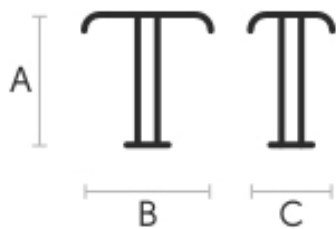


Sage green metal



Dark green metal

Dimensions



| | cm | inch |
|---|-----|------|
| A | 105 | 41,3 |
| B | 45 | 17,7 |
| C | 45 | 17,7 |

Materials Certifications

Dark green metal

The technologies used in the previous phase of powder coating play a fundamental role in the final result of the processing. They are in fact essential to increase adherence paint on the metal surface and then guarantee its duration over time. The metal frames, following a total cleaning of the surface, pass through chemical conversion processes, creating a compact base that allows for better adhesion of the subsequent treatment. In the last phase the object subjected to the powder coating process is placed in a polymerization oven, going to form an adherent and extremely tight layer durable. This particular paint job is ideal for outdoor use.

To clean the surface, use a damp microfiber cloth with neutral soap or specific metal cleaning products. Avoid hitting or rubbing the surface with sharp objects. Do not use scourers or other abrasive materials, since they would inevitably scratch the surface. Do not leave rusty iron objects on the surface for too long.

These surface treatments are not suitable for outdoor use, but they guarantee excellent resistance to frequent use, dirt and dust.