



# Ola CT 45 Coffee Table

design Paolo Vernier, 2016

Ola coffee table with legs and top in lacquered metal or with industrial effect.

Suitable for outdoor use.

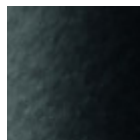


## Colors and Materials

### Structure



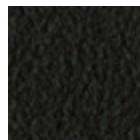
White steel



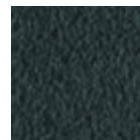
Black steel



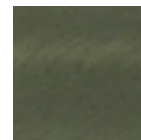
Sand steel



Brown steel



Grafite metal

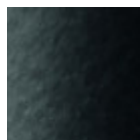


Industrial steel

### Coating



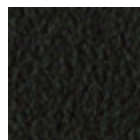
White steel



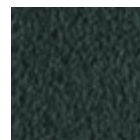
Black steel



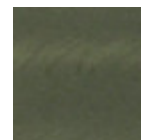
Sand steel



Brown steel

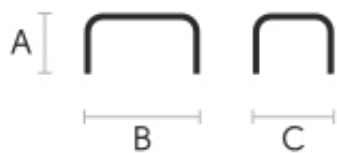


Grafite metal



Industrial steel

## Dimensions



	A (cm)	B (cm)	C (cm)
	(inch)	(inch)	(inch)
Ola CT 45	45	45	47
(cm)	17.7	17.7	18.5
(inch)			

	<b>A (cm)</b>	<b>B (cm)</b>	<b>C (cm)</b>
	(inch)	(inch)	(inch)
<b>Ola CT</b>	50	105	44
<b>105 (cm)</b>	19.7	41.3	17.3
(inch)			

---

## Volumetric Details

**Weight** 6 Kg

**Volume** 0.11 mc

**Package** 1