



Liù S M RS_X Chair

design Archirivolto, 2013

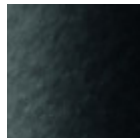
Fixed trestle chair available in chrome or lacquered steel. Seat in Restylon®.

Colors and Materials

Structure



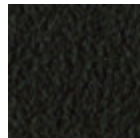
White steel



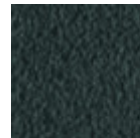
Black steel



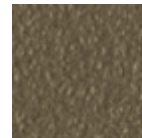
Sand steel



Brown steel



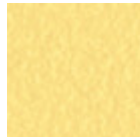
Grafite metal



Fango steel



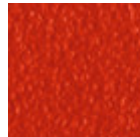
Bronze metal



Pastel yellow steel



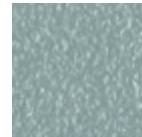
Ocher steel



Red steel



Sage green metal



Light blue metal



Ocean blue steel



Facepowder pink metal



Light grey steel



Chrome



Pink Gold



Black Nickel



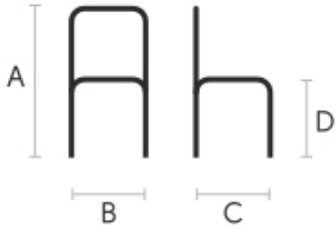
Golden bronze

Coating

Restylon

7 Colors

Dimensions



	cm	inch
A	84	32.3
B	48	18.9
C	55	21.7
D	46	18.1

Volumetric Details

Weight 8.5 Kg

Volume 0.27 mc

Package 1

Downloads

[.3ds Liù S M RS_X \(zip\)](https://www.midj.com/images/uploads/resources/3d-midj-liu-s-m-rs-x-3ds.zip) - <https://www.midj.com/images/uploads/resources/3d-midj-liu-s-m-rs-x-3ds.zip>