



Lea CT-L Coffee Table

design Paolo Vernier, 2019



Lea coffee table with four legs base in lacquered metal. Top in wood or ceramic.

The Lea coffee table is available in three different sizes and is suitable for overlapping games.

Pure and essential in shape, the Lea coffee table is perfect alone or in the original compositions of interlocking tops. Different sizes and materials create a versatile furniture solution, capable of adapting to every need and interior style.

Colors and Materials

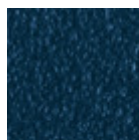
Coating



Light blue metal



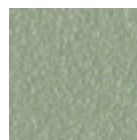
White steel



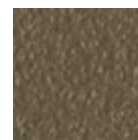
Ocean blue steel



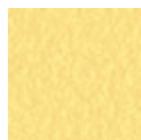
Bronze metal



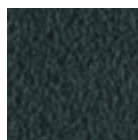
Sand steel



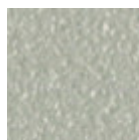
Fango steel



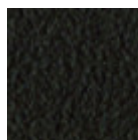
Pastel yellow steel



Grafite metal



Light grey steel



Brown steel



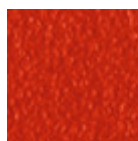
Black steel



Ocher steel



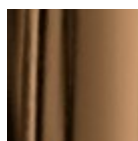
Facepowder pink metal



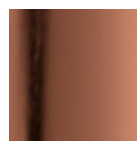
Red steel



Sage green metal



Golden bronze

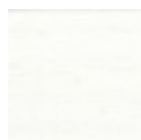


Pink Gold

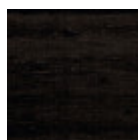


Black Nickel

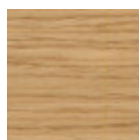
Extensions



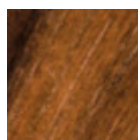
White lacquered veneered ash



Black lacquered veneered ash



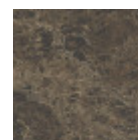
Veneered ash natural oak finish



Veneered flamed walnut



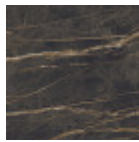
Glossy white calacatta ceramic



Matt emperador marble ceramic



Glossy greek
marble ceramic



Noir desir glossy
marble ceramic



Lead ceramic

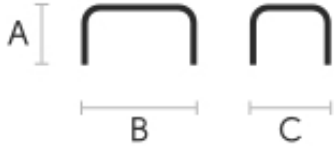


Charcoal savoia
ceramic



Cement Savoia
Ceramic

Dimensions



Volumetric Details

Weight 12.5 Kg

Volume 0.16 mc

Package 1

| | A (cm) (inch) | B (cm) (inch) | C (cm) (inch) |
|--------------------------------|------------------|------------------|------------------|
| CT-L (cm) (inch) | 34 13.4 | 108 42.5 | 39 15.4 |
| CT-S (cm) (inch) | 40 15.7 | 51 20.1 | 51 20.1 |
| CT-M (cm) (inch) | 40 15.7 | 65 25.6 | 45 17.7 |