



# Dama H73 Bistro Table

Bistrò base with four legs base in lacquered steel and available in two heights (h73 and h110 cm - 28.7 and 40.6 in).

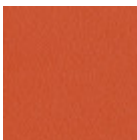
Suitable for square and round tops and for an outdoor use.

Top sizes:  $\varnothing 70$ ,  $\varnothing 80$ , 70x70, 75x75, 80x80 cm -  $\varnothing 27.6$ ,  $\varnothing$ ,  $\varnothing 31.5$ , 27.6x27.6, 29.5x29.5, 31.5x31.5 in).



## Colors and Materials

### Structure



Papaya orange steel



Light blue metal



White steel



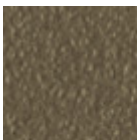
Ocean blue steel



Bronze metal



Sand steel



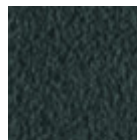
Fango steel



Golden yellow metal



Pastel yellow steel



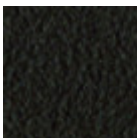
Grafite metal



Ash grey metal



Light grey steel



Brown steel



Black steel



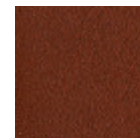
Ocher steel



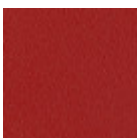
Facepowder pink metal



Red steel



Bulgaro red metal



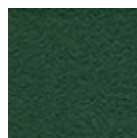
Cherry red metal



Pine green steel

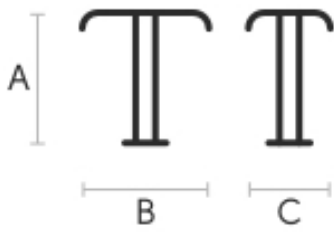


Sage green metal



Dark green metal

## Dimensions



|   | cm | inch |
|---|----|------|
| A | 73 | 28.7 |
| B | 68 | 26.8 |
| C | 68 | 26.8 |

---

## Materials Certifications

### Dark green metal

The technologies used in the previous phase of powder coating play a fundamental role in the final result of the processing. They are in fact essential to increase adherence paint on the metal surface and then guarantee its duration over time. The metal frames, following a total cleaning of the surface, pass through chemical conversion processes, creating a compact base that allows for better adhesion of the subsequent treatment. In the last phase the object subjected to the powder coating process is placed in a polymerization oven, going to form an adherent and extremely tight layer durable. This particular paint job is ideal for outdoor use.

To clean the surface, use a damp microfiber cloth with neutral soap or specific metal cleaning products. Avoid hitting or rubbing the surface with sharp objects. Do not use scourers or other abrasive materials, since they would inevitably scratch the surface. Do not leave rusty iron objects on the surface for too long.

These surface treatments are not suitable for outdoor use, but they guarantee excellent resistance to frequent use, dirt and dust.