



Calla S M_Q PP Chair

design Fabrizio Batoni, 2019

Chair with four steel legs. Polypropylene shell. The chair is suitable for an outdoor use. Optional: cushion upholstered in leather, faux leather or fabric.

Comfortable, light and versatile, the Calla chair with the simplicity of its design and the efficiency of the materials is surprising in domestic and receptive contexts.

Colors and Materials

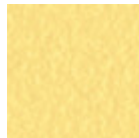
Structure



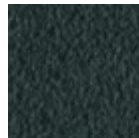
White steel



Sand steel



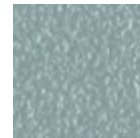
Pastel yellow steel



Grafite metal



Black steel



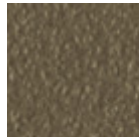
Light blue metal



Ocean blue steel



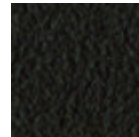
Bronze metal



Fango steel



Light grey steel



Brown steel



Ocher steel



Facepowder pink metal



Red steel



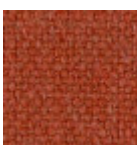
Sage green metal

Coating

Polypropylene

10 Colors

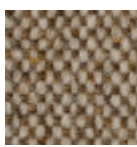
Extensions

**Cotton Club fabric**

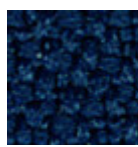
14 Colors

**Fenix Wool fabric**

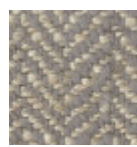
16 Colors

**Main Line Flax fabric**

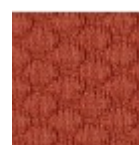
16 Colors

**Mirage fabric**

15 Colors

**Second fabric**

11 Colors

**Visual fabric**

13 Colors

**Velvet Superb**

15 Colors

**Secret faux leather**

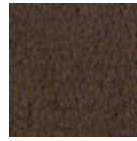
23 Colors

**Vintage faux leather**

12 Colors

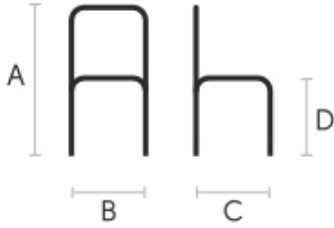
**Fiore leather**

21 Colors

**Vintage leather**

8 Colors

Dimensions



	cm	inch
A	78	30,7
B	46	18,1
C	53	20,9
D	46	18,1

Volumetric Details

Weight 6 Kg**Volume** 0.15 mc**Package** 1

Downloads

[.dae Calla S M_Q PP \(zip\)](https://www.midj.com/images/uploads/resources/3d-midj-calla-s-m-q-pp-dae.zip) - <https://www.midj.com/images/uploads/resources/3d-midj-calla-s-m-q-pp-dae.zip>[.dxf Calla S M_Q PP \(zip\)](https://www.midj.com/images/uploads/resources/3d-midj-calla-s-m-q-pp-dxf.zip) - <https://www.midj.com/images/uploads/resources/3d-midj-calla-s-m-q-pp-dxf.zip>[.obj Calla S M_Q PP \(zip\)](https://www.midj.com/images/uploads/resources/3d-midj-calla-s-m-q-pp-obj.zip) - <https://www.midj.com/images/uploads/resources/3d-midj-calla-s-m-q-pp-obj.zip>[.stl Calla S M_Q PP \(zip\)](https://www.midj.com/images/uploads/resources/3d-midj-calla-s-m-q-pp-stl.zip) - <https://www.midj.com/images/uploads/resources/3d-midj-calla-s-m-q-pp-stl.zip>[.dxf Calla S M_Q PP TS \(zip\)](https://www.midj.com/images/uploads/resources/3d-midj-calla-s-m-q-pp-ts-dae.zip) - <https://www.midj.com/images/uploads/resources/3d-midj-calla-s-m-q-pp-ts-dae.zip>[.dxf Calla S M_Q PP TS \(zip\)](https://www.midj.com/images/uploads/resources/3d-midj-calla-s-m-q-pp-ts-dxf.zip) - <https://www.midj.com/images/uploads/resources/3d-midj-calla-s-m-q-pp-ts-dxf.zip>[.obj Calla S M_Q PP TS \(zip\)](https://www.midj.com/images/uploads/resources/3d-midj-calla-s-m-q-pp-ts-obj.zip) - <https://www.midj.com/images/uploads/resources/3d-midj-calla-s-m-q-pp-ts-obj.zip>[.stl Calla S M_Q PP TS \(zip\)](https://www.midj.com/images/uploads/resources/3d-midj-calla-s-m-q-pp-ts-stl.zip) - <https://www.midj.com/images/uploads/resources/3d-midj-calla-s-m-q-pp-ts-stl.zip>

Materials Certifications

Polypropylene

Polypropylene is a resistant, non-toxic, odorless, heat resistant and easy to clean plastic material. It is also suitable for outdoor use. Our polypropylene is a material reinforced with glass fiber: an option with excellent mechanical properties that allows the product to be solid and resistant. This material has a marked resistance to fading: a treatment with UV stabilizer and AS antistatic protection works to prolong the beauty of the product by slowing the fading process. However, by exposing the chair to the sun and atmospheric agents for very long periods, the color can undergo alterations. As a thermoplastic material, it is 100% recyclable.

CLEANING AND MAINTENANCE

Polypropylene seats are easy to clean, and do not require the use of specific products, except in the case of stubborn and hard to remove stains. For simple and effective cleaning, use a microfiber cloth soaked in water or a solution of water and neutral soap. In case of stubborn stains, it is possible to act directly on them with a neutral detergent, always with the help of a microfiber cloth. Then rinse with water. Avoid abrasive sponges, stain removers and granular cleaners that could scratch the surface. If using a chlorine-based cleaner, rinse and do not dry in direct sunlight.

These tips are cleaning recommendations and do not guarantee complete stain removal.

We recommend that you always test the cleaning method on a hidden part of the item to check the

resistance of the material.