



Trampoliere OUT S M Chair

design Roberto Paoli, 2013

Trampoliere chair with four legs base in lacquered steel is stackable up to four pieces and suitable for outdoor use.

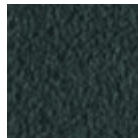
This chair has the CATAS certification.

Colors and Materials

Structure



White steel



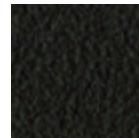
Grafite metal



Black steel



Sand steel



Brown steel



Pastel yellow steel



Light blue metal



Fango steel



Red steel



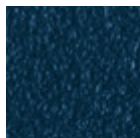
Bronze metal



Ocher steel



Sage green metal



Ocean blue steel

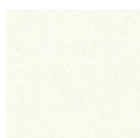


Light grey steel

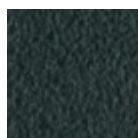


Facepowder pink metal

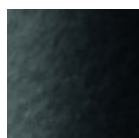
Coating



White steel



Grafite metal



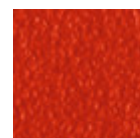
Black steel



Pastel yellow steel

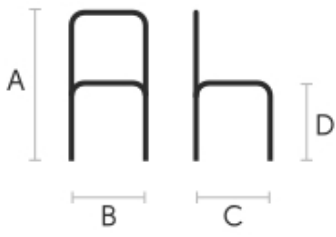


Light blue metal



Red steel

Dimensions



Volumetric Details

Weight 6.5 Kg
Volume 0.32 mc
Package 1

Certifications



CATAS
EN 1728

	cm	inch
A	77	30.3
B	46	18.1
C	52	20.5
D	46	18.1

Downloads

[3D Trampoliere S OUT \(zip\)](https://www.midj.com/images/uploads/resources/trampoliere-s-out-3d.zip) - <https://www.midj.com/images/uploads/resources/trampoliere-s-out-3d.zip>